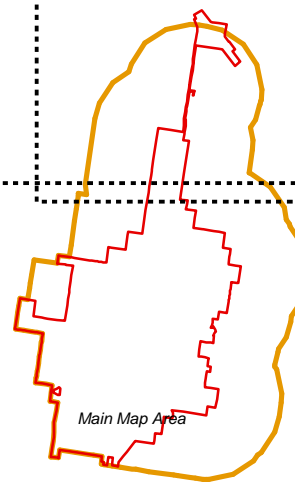
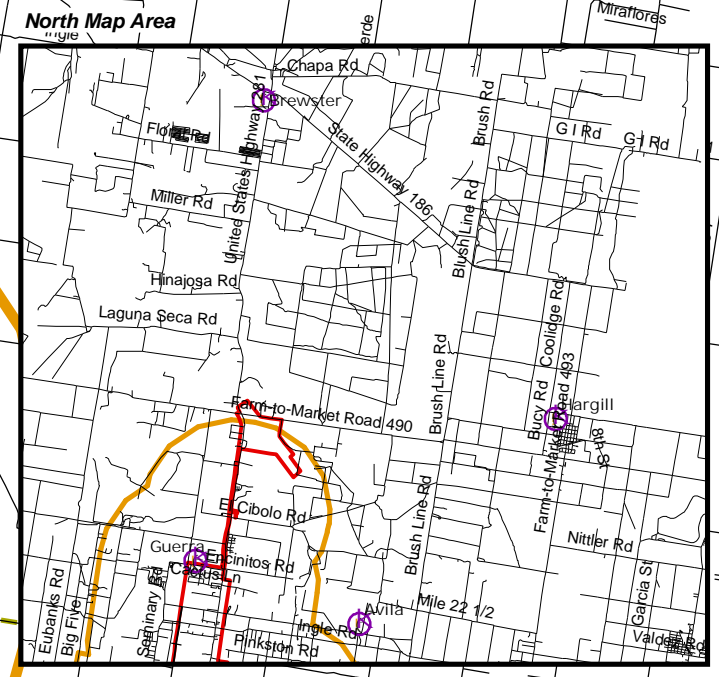
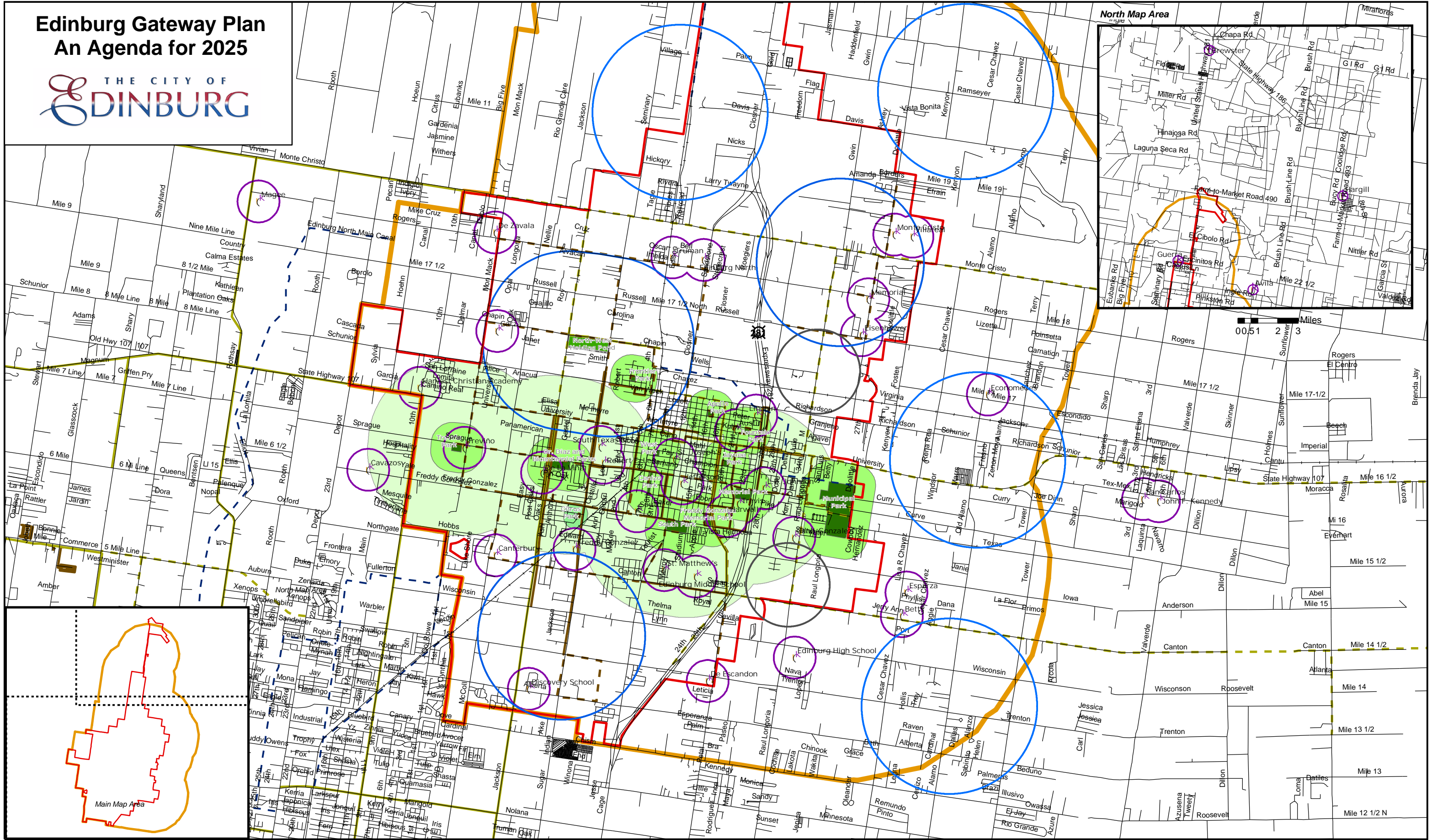


Edinburg Gateway Plan An Agenda for 2025



Legend	
	Existing Park
	Proposed Future Park
	Mini-Park Service Area (1/8 mile)
	Neighborhood Park Service Area (1/4 mile)
	Community Park Service Area (1 mile)
	Proximity for Future Community Park
	Proximity for Future Large Neighborhood Park
	Existing School Property
	Proposed School Enhancements
	City Limits
	ETJ Boundary (2 mile)
	Existing Bike Lane
	Proposed Bikeway
	Proposed Hike & Bike Trail
	Existing Sidewalk
	Proposed Priority Sidewalk
	Roads
	Rail Lines



Figure 6.2, Parks and Recreation System Plan



Future Land Use Plan Approved 10/4/05
By Edinburg City Council